

Synaptophysin Antibody
Rabbit mAb
Catalog # AP90316**Specification**

Synaptophysin Antibody - Product Information

Application	WB, IHC, FC, ICC, IP
Primary Accession	P08247
Reactivity	Rat
Clonality	Monoclonal
Other Names	
Major synaptic vesicle protein p38; MRXSYP; Synaptophysin; SYP; SYPH; Syn p38; Sypl;	
Isotype	Rabbit IgG
Host	Rabbit
Calculated MW	33845 Da

Synaptophysin Antibody - Additional Information

Dilution	WB~~1:1000 IHC~~1:100~500 FC~~1:10~50 ICC~~N/A IP~~N/A
Purification	Affinity-chromatography
Immunogen	A synthesized peptide derived from human Synaptophysin
Description	SYP Possibly involved in structural functions as organizing other membrane components or in targeting the vesicles to the plasma membrane. Involved in the regulation of short-term and long-term synaptic plasticity. Belongs to the synaptophysin/synaptobrevin family. Homohexamer or homotetramer.
Storage Condition and Buffer	Rabbit IgG in phosphate buffered saline , pH 7.4, 150mM NaCl, 0.02% sodium azide and 50% glycerol. Store at +4°C short term. Store at -20°C long term. Avoid freeze / thaw cycle.

Synaptophysin Antibody - Protein Information**Name** SYP**Function**

Possibly involved in structural functions as organizing other membrane components or in targeting the vesicles to the plasma membrane. Involved in the regulation of short-term and long-term synaptic plasticity (By similarity).

Cellular Location

Cytoplasmic vesicle, secretory vesicle, synaptic vesicle membrane; Multi-pass membrane protein. Synapse, synaptosome

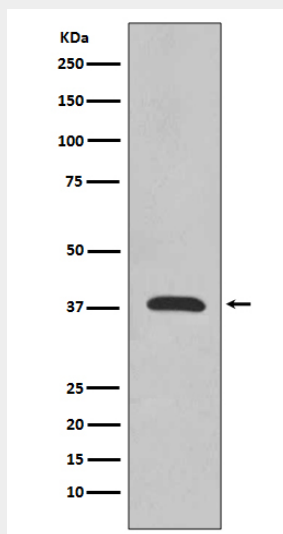
Tissue Location

Expressed in the brain, with expression in the hippocampus, the neuropil in the dentate gyrus, where expression is higher in the outer half of the molecular layer than in the inner half, and in the neuropil of CA4 and CA3 (PubMed:8838578). Expressed in the putamen (at protein level) (PubMed:17296554)

Synaptophysin Antibody - Protocols

Provided below are standard protocols that you may find useful for product applications.

- [Western Blot](#)
- [Blocking Peptides](#)
- [Dot Blot](#)
- [Immunohistochemistry](#)
- [Immunofluorescence](#)
- [Immunoprecipitation](#)
- [Flow Cytometry](#)
- [Cell Culture](#)

Synaptophysin Antibody - Images

Western blot analysis of Synaptophysin expression in rat brain lysate.